

Printing to the NETGEAR WGPS606 Wireless Print Server with Macintosh OS X (10.4.2) “Tiger”

Public Document

September 6, 2005

NETGEAR recommends using a Windows PC to initially configure the WGPS606 using the Printer Setup Utility included on the Resource CD which shipped with the WGPS606.

**Check here for more information and the latest updates:
<http://kbserver.netgear.com/products/WGPS606.asp>**

These procedure are for Macintosh OS 10.4.x “Tiger”. These instructions do not apply to any previous version of the Macintosh OS.

Check your Macintosh OS version, by clicking the Apple logo in the upper left hand corner of the Menu bar and select *About this Mac*.

Confirm the Version number is at least 10.4.2 as shown below.



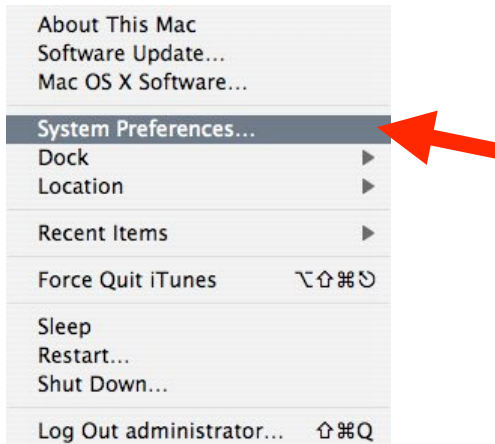
**Tested with WGPS606 Firmware version 1.0.020
WGPS606 must have an IP configured either with the Printer Utility or the Web Configuration GUI, or by DHCP.**

Macintosh computer must be able to *ping* the WGPS606 using the Terminal program:

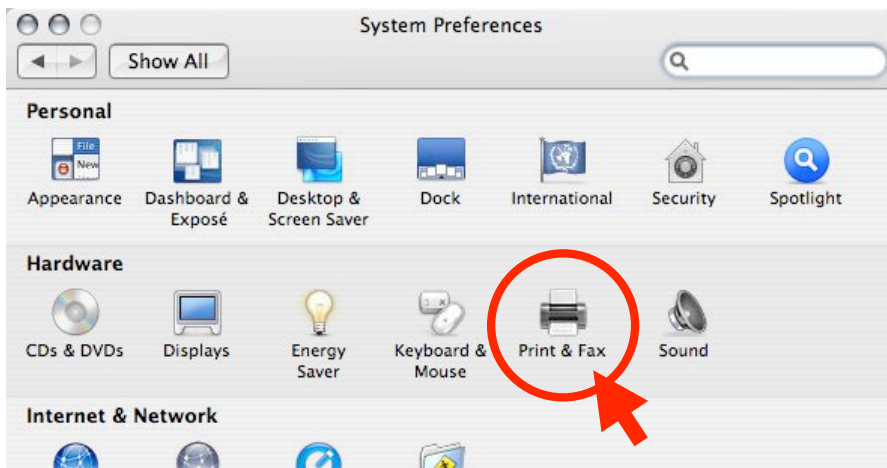
**To open the Macintosh Terminal program, go to:
Menu bar → Go → Utilities → Terminal**

**At the prompt, type: ping <ip address of the WGPS606>
Example: ping 192.168.0.102**

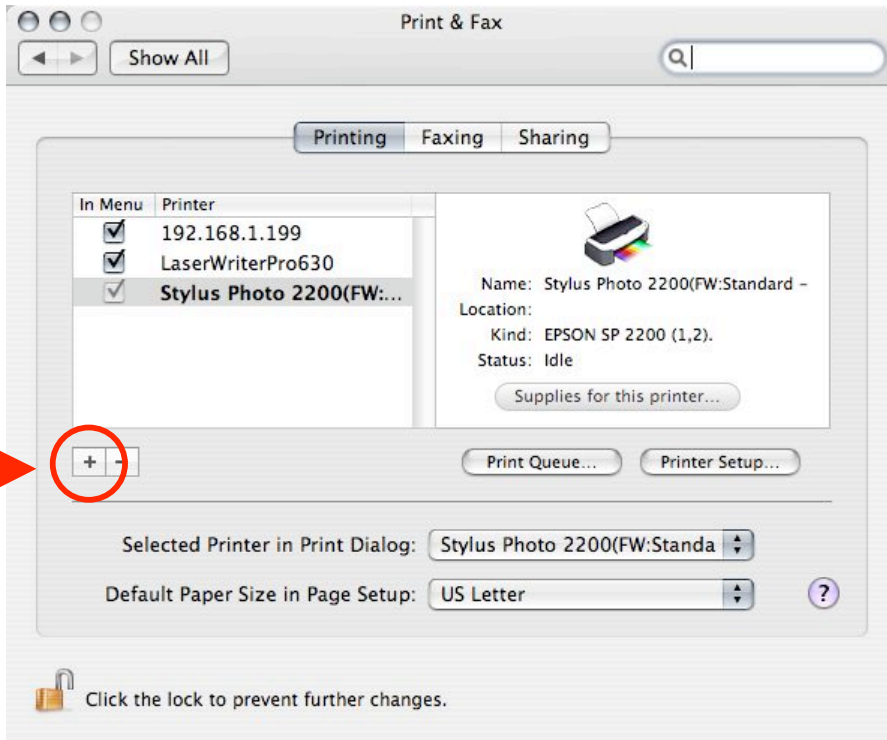
Start Here



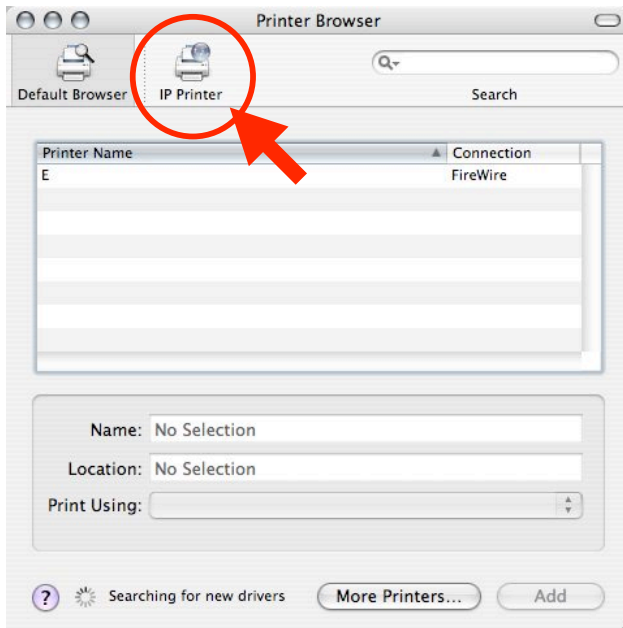
Open the System Preferences
Menu bar → System Preferences



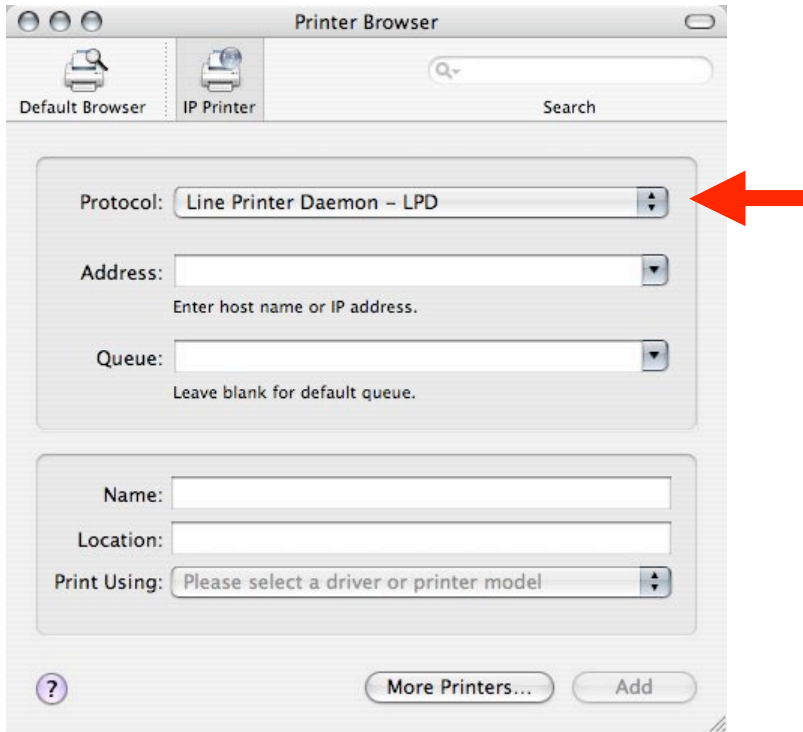
Click on “Print and Fax” icon



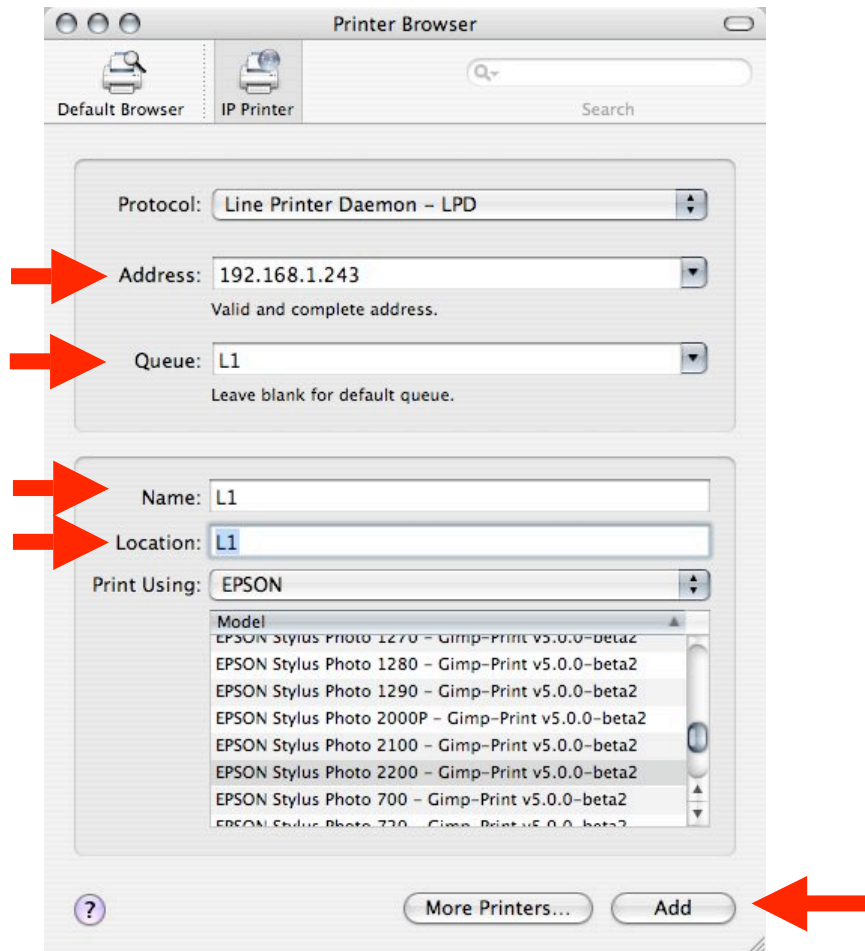
Click on the “+” icon to add a new printer



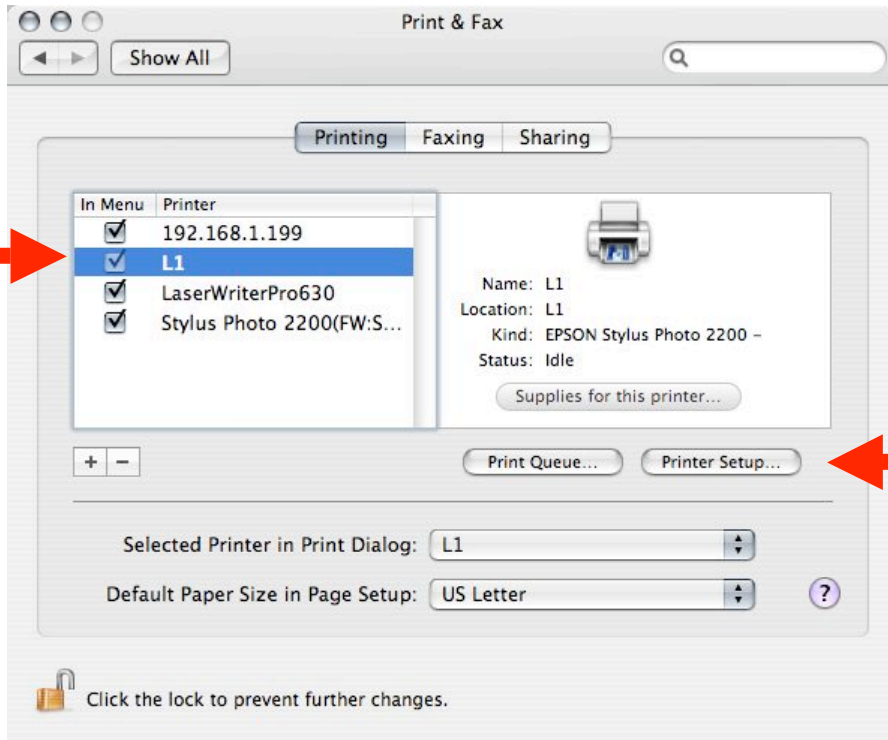
Click on the “IP Printer” icon



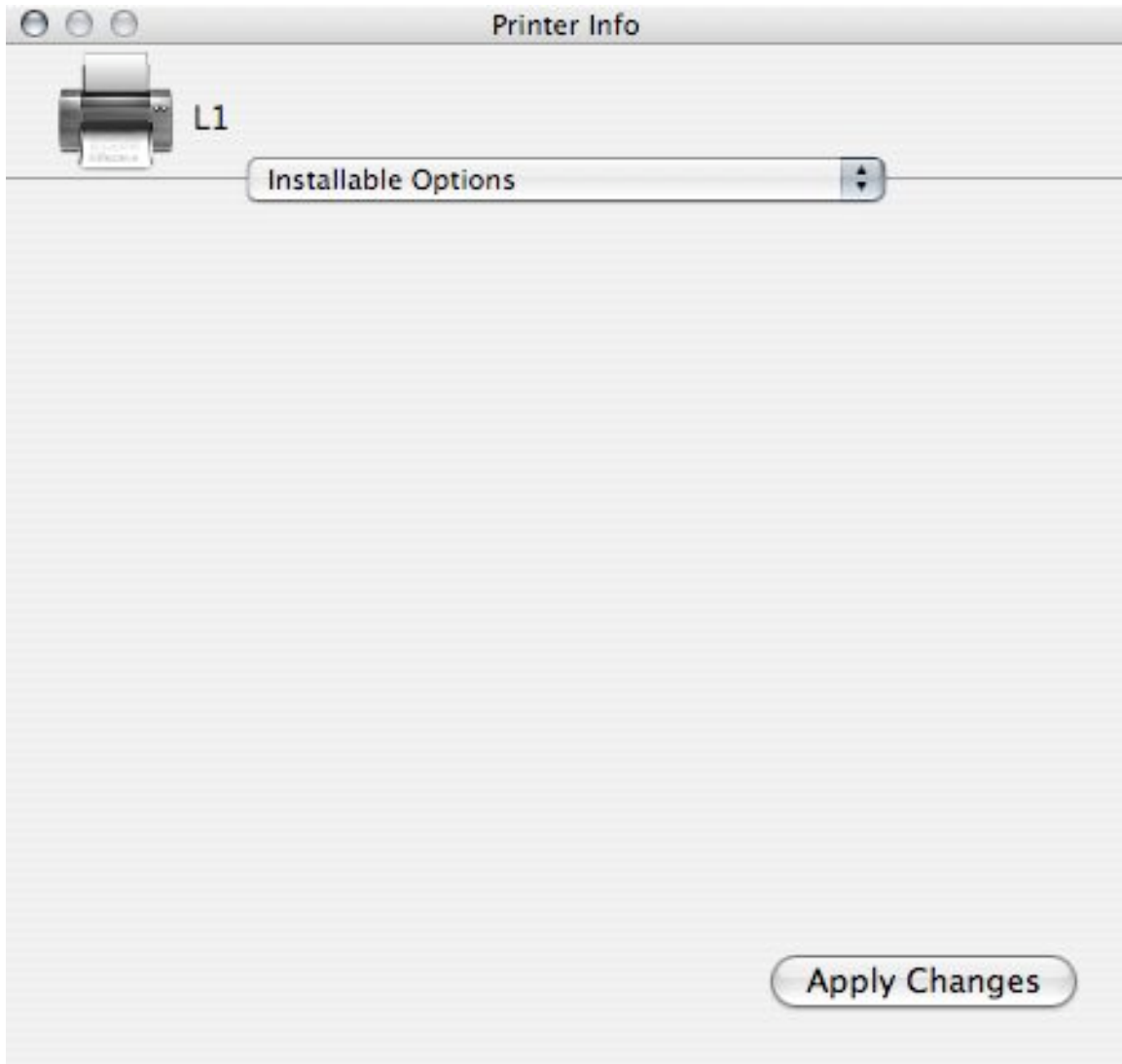
Select “Line Printer Daemon – LPD”



1. In the Address field, enter the IP address of the WGPS606
2. In the Queue field, enter *L1*
3. In the Name field, enter *L1*
4. Select the printer manufacturer from the pull down
5. Select the printer model from the scroll box
6. Click Add



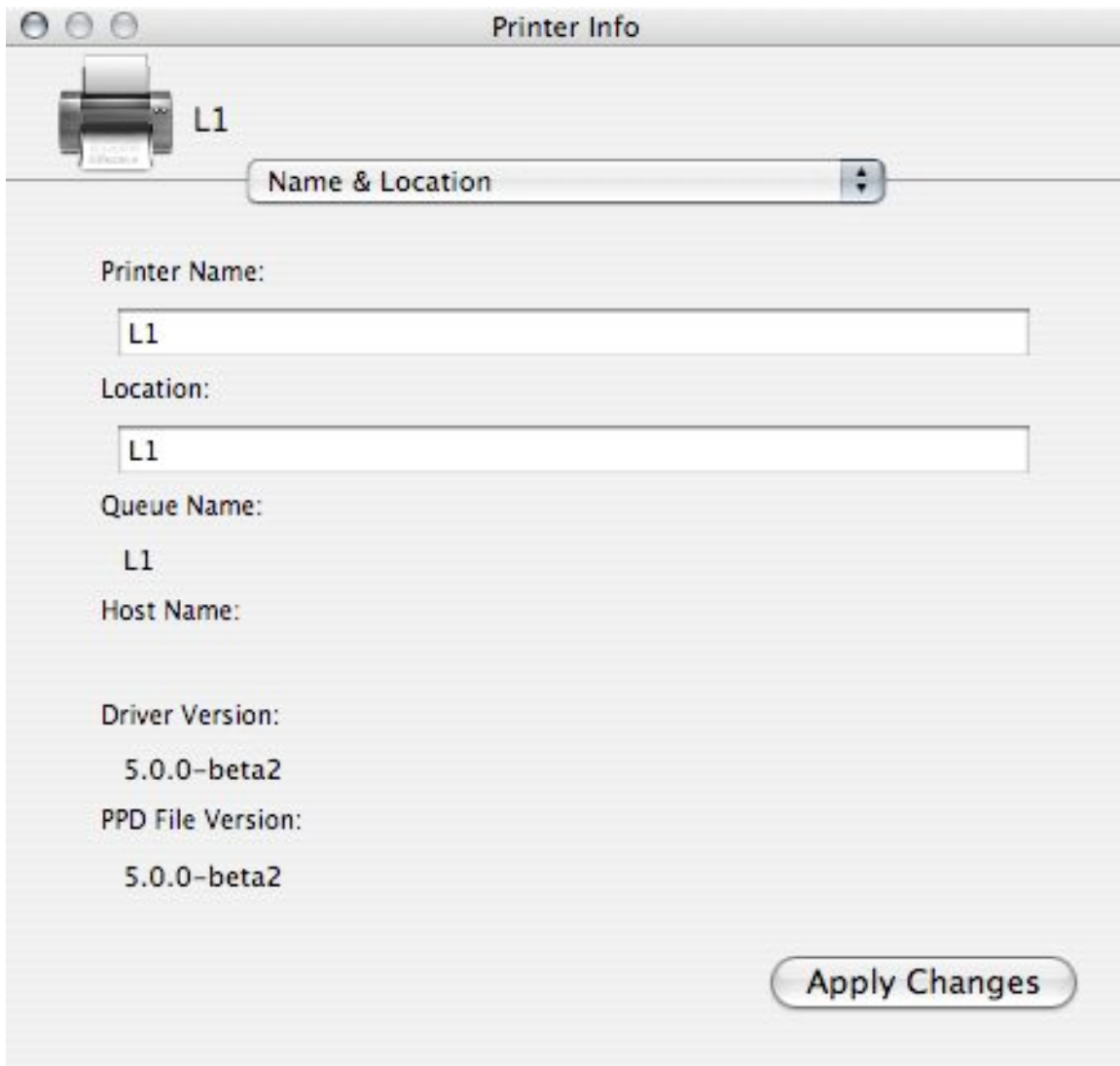
1. Click once on *L1* to select it
2. Click on **Printer Setup**

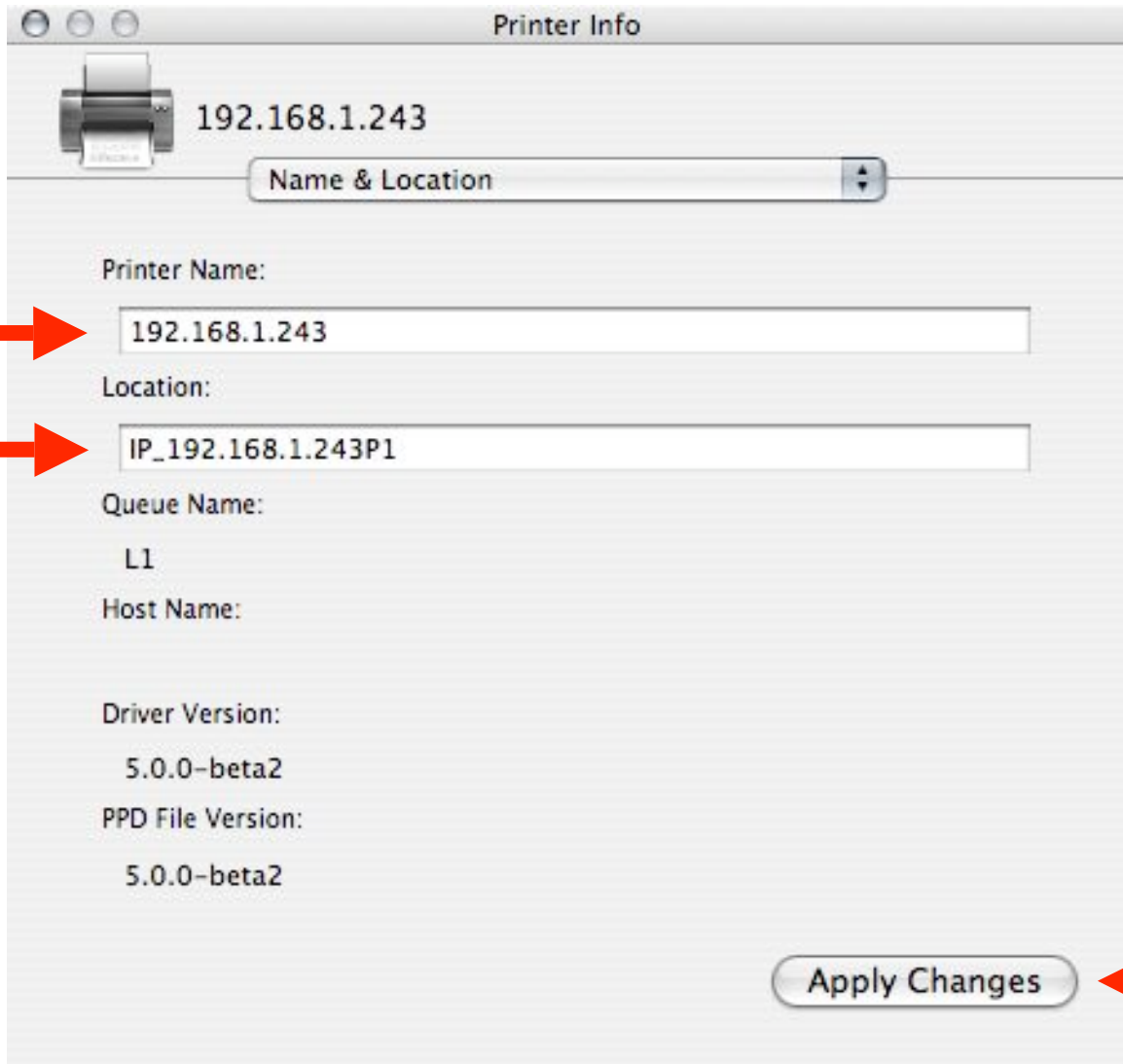


**Click on the “Installable Options”
pulldown menu and select “Name &
Location”**



The following screen will display:





- 1. Change Printer Name to IP address of WGPS606**
- 2. Change Location to:
IP_<ip of WGPS606>P1**
- 3. Click on Apply Changes**

The Macintosh is now ready to print.

Note:

When adding a second printer to the second USB port on the WGPS606 to your Macintosh,

Use “L2” as the Queue name;

**And change the Location to:
IP_<ip of WGPS606>P2**

End of Document